

SANTA FE





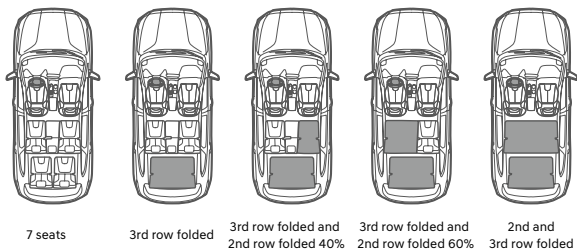
A button-type gear shift lever is located conveniently on the center console, while video images of the vehicle's side rear blind spots can be seen on the cluster, making tricky lane changes safe and easy. Different drivers can also conveniently select previously-saved profiles for preferred preferred GPS settings, air conditioning, radio and other features.

Making every day comfortable.

Santa Fe's interior isn't just bigger – it's filled with more thoughtfulness for the entire family. The high center console's soft and plush leather surface offers the comfort of an armchair the moment you sit down, while the neatly-aligned buttons allow hassle-free control of various functions. The state-of-the-art digital cluster and LCD screen are visually attractive to watch as they provide you with meticulous care while you drive.

* Features and specifications vary by market. Please consult your local dealer.





Don't worry about extra family members or distances with the Santa Fe. A wide choice of seat variations and convenient features will accommodate everyone, everywhere. A simple button is all it takes to fold and slide the second row seats forward for easier access to the third row seats, while Santa Fe's new platform and layout design provides more room in the second row and cargo area, ensuring a comfortable journey for all. When both hands are full, thoughtful details like the Smart Power Tailgate will take a load off your shoulders.

2nd and 3rd Row Seats & Space



One-Touch Walk-in & Folding / Smart Power Tailgate



* Features and specifications vary by market. Please consult your local dealer.

Smart technology used wisely.

Simply adding a lot of technology to a car won't make it safer. Rather, Santa Fe is designed to smartly minimize the dangers in our everyday driving environment to ensure safety. So the next time you feel at ease backing out of a tight space or parking in a tricky spot, just know that Santa Fe's got your back.

Surround View Monitor (SVM)

4 HD cameras mounted on the front, sides, and rear of the vehicle show the surroundings in real time.



Being prepared involves detailed and meticulous care. Santa Fe's Advanced Driver Assistance System considers the various conditions a driver might unexpectedly face to undertake complex decisions or minimize mistakes.

Blind-Spot Collision-Avoidance Assist (BCA)

When operating the turn signals to change lanes, if there is a risk of collision with a rear side vehicle, the function provides a warning. If the collision risk increases even after the warning, the function automatically controls the vehicle to help avoid a collision. If there is a risk of collision with a rear side vehicle while exiting a parallel parking spot, the function automatically assists with emergency braking.

Safe Exit Assist (SEA)

This function provides a warning if a vehicle approaching from the rear side is detected as the occupant opens the door to exit the vehicle. If you attempt to deactivate the child safety lock in such situations, SEA will override you to keep the rear doors closed.



* Features and specifications vary by market. Please consult your local dealer.

Diverse power options controlled easily.

Santa Fe's powerful driving performance boasts not only eye-catching numbers, but a wide range of options such as dynamic or comfortable driving, depending on the road conditions. Santa Fe also automatically recognizes the core driving tendencies of different family members, offering optimal driving modes for each driver.

2.5 MPI Gasoline Engine

180 Maximum Power
ps/6,000 rpm

23.7 Maximum Torque
kg-m/4,000 rpm

2.2 CRDi Diesel Engine

202 Maximum Power
ps/3,800 rpm

45.0 Maximum Torque
kg-m/1,750~2,750 rpm

Drive Mode

Simply turn knob to select the mode that suits you best: COMFORT for everyday driving, ECO for optimal fuel efficiency, SPORT for quicker acceleration, or SMART which automatically adjusts gear shift intervals based on recent driving patterns.



Multi Terrain Control

When the going gets tough, Snow, Mud and Sand modes assure optimal tire traction over different types of rough terrain. A quick glance at the center cluster or AVN will confirm terrain mode status.



17" Alloy Wheels



18" Alloy Wheels



19" Alloy Wheels



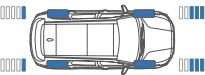
20" Alloy Wheels

Equipped with diverse driving capabilities and a new platform that provides a spacious interior, the new Santa Fe's power and flexibility make it a family SUV ready for any situation. Features such as its AWD system, which optimally distributes power to the front and rear wheels depending on the driving conditions, and enhanced cargo space and leg room in the second and third rows will ensure a comfortable ride for any journey.

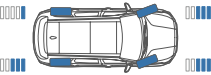
HTRAC All-Wheel Drive

This system automatically senses slippery or unstable driving conditions that even the driver may not detect and proactively balances power between the front and rear wheels to ensure stability at all times.

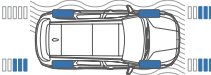
Highway Cruise



Cornering



Slippery Road



New Body Platform

A new, next-generation platform has been applied to the Santa Fe, maximizing vehicle stability and creating more cargo space and legroom in the second and third rows. The new platform also brings with it significant improvements in collision safety, thanks to the increased usage of Advanced High-Strength Steel and hot stamping.

2nd Row Leg Room (7seats)

1,040mm

3rd Row Leg Room

746mm

Cargo Capacity (7seats, 3rd row folded)

max 782ℓ



* Features and specifications vary by market. Please consult your local dealer.

Interior colors



Black One-tone Interior



Cognac Two-tone Interior



Dark Beige Two-tone Interior



Camel Two-tone Interior

Features



Full LED Projection headlamp



Rear Combination Lamps



LED Rear Combination Lamps



LED Outside Mirror Repeaters



Radiator Grille



Beltline Molding



Side Garnish



Panorama Sunroof



Rear Occupant Alert



Full Auto Air Conditioning System



8" Display



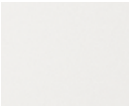
Front Seat Warming & Cooling
Air Ventilation



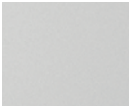
Rear Door Manual Curtain

* Features and specifications vary by market. Please consult your local dealer.

Exterior colors



White Cream (WW2)



Glacier White (W3A)



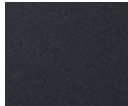
Typhoon Silver (T2X)



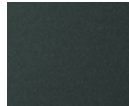
Magnetic Forest (M2F)



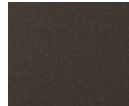
Phantom Black (NKA)



Lagoon Blue (UE3)



Rain Forest (R2F)



Taiga Brown (RN7)



Lava Orange (YR2)

Specifications

Type		Gasoline	Diesel
Engine		2.5 MPI Gasoline Engine	2.2 CRDi Diesel Engine
Engine type		In Line 4 - Cylinders	In Line 4 - Cylinders
Displacement (cc)		2,497	2,151
Max. Power (ps / rpm)		180 / 6,000	202 / 3,800
Max. Torque (kg-m / rpm)		23.7 / 4,000	45.0 / 1,750 ~ 2,750
Electric Motor			
Electric Motor type		-	-
Electric Motor Max. Power (kW)		-	-
Electric Motor Max. Torque (Nm)		-	-
Brakes			
Front		17" (Φ325x30t), 18" (Φ345x30t) (OPT)	
Rear	with ABS	17" (Φ325x20t)	
Suspension			
Front		McPherson Strut Type	
Rear		Multi-Link Type	
Tire			
		235/65 R17, 235/60 R18, 255/45 R20	
Dimensions			
Head Room (mm)	1st row (w/Sunroof) / 2nd row (w/Sunroof) / 3rd row	1,016 (974) / 990 (958) / 917	
Leg Room (mm)	1st row / 2nd row (5 Seats) / 3rd row	1,052 / 1,040 (1,060) / 746	
Shoulder Room (mm)	1st row / 2nd row (w/Curtain) / 3rd row	1,500 / 1,480 (1,450) / 1,344	

- The above values are results from internal testing and are subject to change after validation.
- Some of the equipment illustrated or described in this catalog may not be supplied as standard equipment and may be available at extra cost.
- Hyundai Motor Company reserves the right to change specifications and equipment without prior notice.
- The color plates shown may vary slightly from the actual colors due to the limitations of the printing process.
- Please consult your dealer for full information and availability on colors and trims.

- Note:**
- Some of the equipment illustrated or described in this catalogue may not be available for the local market.
 - Laxmi InterContinental Pvt. Ltd. reserves the right to change specifications and equipment without prior notice.
 - Please consult the authorized Hyundai Dealer for the full information and availability of the variant, features and color options.



Overall Length 4,785
Wheel Base 2,765



Overall Width 1,900
Wheel Tread 1,637



Wheel Tread 1,647

Unit : mm

