



HYUNDAI

NEW THINKING.
NEW POSSIBILITIES.

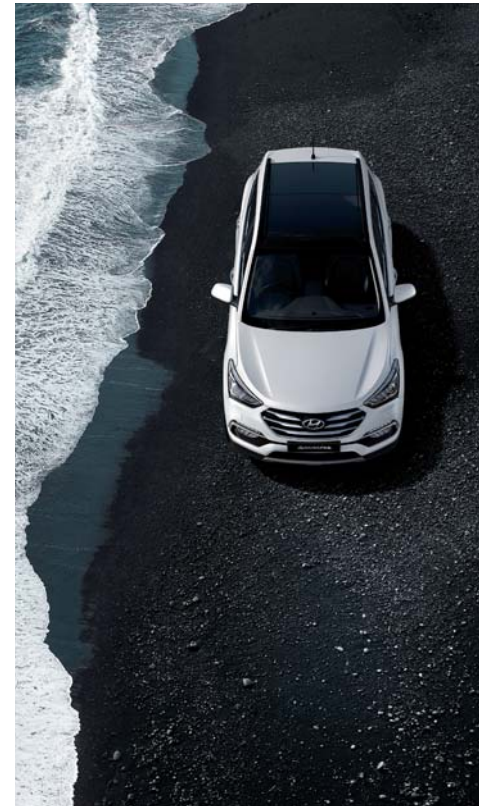
SANTAFE 





INSPIRE ME

A spontaneous concert of the wind, sun, and off-road driving...
An unforgettable moment that a camera could not possibly capture...
Santa Fe and I cruise in search of moving experiences in places
where the unknown overshadows what is known.





A. ED daytime running lights (DRL) & Front fog lamps

Santa Fe comes equipped with LED daytime running lights (DRL) that enhance the safety of daytime driving, as well as fog lamps and cornering lamps that help improve visibility.

B. Outside mirrors with Electric folding

Built-in heat coils improve visibility during bad weather. Power folding makes operation more convenient. Exceptionally designed puddle lamps have integrated outside mirror repeaters and a welcome function.

C. LED high-mounted stop lamp

A high-mounted stop lamp with bright red LEDs is integrated into the tailgate, increasing visibility from behind when brakes are applied.

D. Dual mufflers

The trapezoidal design of the dual mufflers imparts a sharply differentiated high performance image and European-style sportiness.

E. 18" alloy wheels

Sporty yet chic, the wheels deliver outstanding driving stability and durability.



Supervision cluster with color TFT LCD

A sharper and more sophisticated supervision cluster with a 4.2" color TFT LCD facilitates a wide range view of driving and vehicle status information and enhances Santa Fe's futuristic interior design.



Full auto air conditioning system

The driver and passengers can enjoy independent temperature settings. People seated in the back can enjoy the pleasant environment created by the 2nd row ventilation system.



Panorama sunroof

Santa Fe's panorama sunroof offers greater airiness than conventional panorama sunroofs by eliminating the center beam of headlining and using motor-driven roller blinds.



Leather seats



Audio system

The audio system features 6 speakers for outstanding, life-like reproduction and enjoyment of diverse media, including radio, CD, and MP3 files. Options include an LCD and optimally placed function buttons that enhance the convenience of listening to music.



Sound system with 6 speakers



Drive mode control system

Santa Fe conveniently offers a choice of 3 driving modes – normal, sports, and eco – at a touch of a button to match drivers' mood and driving conditions.



A



B



C



D



E



F

A. Smart key

A cutting-edge system locks and unlocks the doors and allows the engine to be started by simply retaining the smart key within a given distance of the vehicle.

B. Engine start/stop button

The engine can be turned on and off easily at the press of a button without the need to insert a key into a keyhole.

C. Glove box

The glove box contains a cooling area that is large enough to store and refrigerate drinks in hot weather.

D. Driver's seat adjustment control system

The driver's seat, adjustable in 12 different ways, can be optimized in 8 different positions. Lumbar support can also be adjusted in 4 different ways to provide greater driving comfort.

E. 2nd row seat folding system

2nd row seat layout is designed to provide passengers with maximum comfort. 2nd row seat remote folding feature conveniently expands the cargo space with the activation of a lever.

F. Seat warming & cooling air ventilation

The front seat ventilation system circulates air naturally for a more comfortable ride, and seat warmers in every seat provide a warm and cozy travel experience to every passenger.



Integrated memory system (IMS)

An Integrated memory system (IMS) allows recalling up to two profiles for automatic seat and outside mirrors adjustment.



Electric parking brake (EPB)

The parking brake is automatically activated when the vehicle comes to a stop, preventing it from rolling as well as sliding when restarting on a hill.



Cargo capacity

Generous storage space makes it possible to load large, voluminous items. A cargo compartment screen helps make the interior look tidy.



Electronic stability control (ESC) with 4-wheel drive assistance control

Electronic stability control (ESC) with 4-wheel-drive assistance control is a function that minimizes the risk of running off course while entering a curve at high speeds. The 4-wheel-drive assistance control distributes traction to the rear wheels while ESC applies the brakes on the inner rear wheel to help control the vehicle at a stage that preempts conventional ESC systems.



6-airbag system

Santa Fe is equipped with front airbags, 2-side airbags, and curtain airbags that minimize passenger injuries in the event of a collision.



Rear-view display system

The rear-view display system promotes safe driving and parking by enabling drivers to see the back of the car through the display while backing up or parking.



Down-hill brake control (DBC)

Santa Fe can tackle any hill with Down-hill brake control (DBC), which automatically applies a braking force when going down a steep road.



Front & rear suspension

Front McPherson strut type suspension delivers greater stability and a better ride while driving and braking. Rear multi-link suspension makes possible the creation of a more spacious rear compartment than in-wheel rear suspension cars, offering a more comfortable ride.



2.2 CRDi diesel engine

Max. power **193 ps / 3,800 rpm**
Max. torque **45.0 kg·m / 1,750~2,750 rpm**
• Combined • Automatic transmission • 4-wheel drive



6-speed automatic transmission

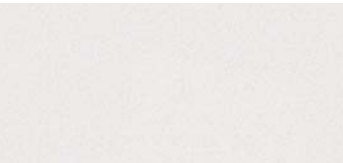
The step-change performance improvements in acceleration, durability, and efficiency of Santa Fe's 6-speed automatic & manual transmission enable drivers to simultaneously experience the excitement and convenience of driving.

KEY FEATURES

SANTAFE FEATURE LIST	2.2 CRDi diesel engine
EXTERIOR	
Chrome Radiator Grille	•
Outside Mirror Electric Folding	•
Corner's Light	•
Outside Mirror Heated	•
Roof Rack	•
Outside Door Handle Chrome Coating	•
Panoramic Sunroof	•
18" Alloy Wheel + Tire	•
Full Size Spare Tire	•
INTERIOR	
Deluxe Door Scuff	•
Cargo Screen	•
Luggage Mat	•
Leather Seat Covering	•
Leather (Steering Wheel and Gear Knob)	•
Power Seats (Driver and Passenger)	•
Ash Tray & Cigar Lighter	•
Glove Box Cooling	•
SAFETY	
Anti Lock Braking System (ABS)	•
ESC (Electronic Stability Control)	•

SANTAFE FEATURE LIST	2.2 CRDi diesel engine
EPB (Electronic Parking Brake)	•
Down-hill brake control (DBC)	•
Airbags (Driver / Passenger)	•
Side / Curtain Airbags	•
Front Fog Lamp	•
Day Time Running Light (Dedicated LED)	•
Rear Parking Assist System	•
Auto Light Control System	•
COMFORT & CONVENIENCE	
Ims (Integrated Memory Seat)	•
Drive Mode Select	•
Front Seat Heated	•
Smart Key with Push Button Start	•
Rain Sensor	•
Cruise Control	•
Full Auto Air Conditioning	•
Rear Air Conditioning	•
Supervision Cluster	•
5.0 INT LCD Screen	•
Surround Sound	•
Blue Tooth	•

EXTERIOR COLORS



White crystal



Platinum silver



Titanium silver



Ocean view



Red merlot

SPECIFICATIONS

Type			2.2 CRDi diesel engine
Dimensions	Exterior (mm)	Overall length	4,700
		Overall width	1,880
		Overall height	1,680 (1,690 : Including roof rack)
		Wheel base	2,700
Engine	Displacement (cc)		2,199
	Max. power (ps / rpm)		193 / 3,800
	Max. torque (kg-m / rpm)		45.0 / 1,750 ~ 2,750
Suspension	Type	Front / Rear	McPherson strut type / Multi-link
	Shock absorber	Front / Rear	Strut type (gas) / Shock absorber type (gas)
Brakes	General		Dual-diagonal, split-circuit, power-assisted braking system with EBD
	Front brake type		Ventilated Disc
	Rear brake type	with ABS	Solid Disc
ABS			4-wheel electronic, 4-sensor, 4-channel electronic brake distribution, brake torque distribution system (EBD)
Tire			235 / 60 R18, 235 / 55 R19
Ground Clearance (mm)			185
Boot Space (l)			5 Seater : 585 / 7 Seater : 516
Fuel tank capacity (l)			64
Minimum Turning Radius (m)			5.45
Gross Vehicle Weight (kg)			2510
Kerb Weight (kg)			1717-1870
Transmission			6-speed
4-wheel drive system			Active on-demand

- The above values are results from internal testing and could be changed after validation.
- Some of the equipment illustrated or described in this catalog may not be supplied as standard equipment and may be available at extra cost.
- Hyundai Motor Company reserves the right to change specifications and equipment without prior notice.
- The color plates shown may vary slightly from the actual colors due to the limitations of the printing process.
- Please consult your dealer for full information and availability on colors and trims.

DIMENSIONS

Unit : mm



*Wheel tread • 17" alloy wheels (Front/rear) : 1,633/1,644 • 18" alloy wheels (Front/rear) : 1,628/1,639 • 19" alloy wheels (Front/rear) : 1,628/1,639

NEW THINKING. NEW POSSIBILITIES.

People's expectation toward individual mobility requires more than just a convenient means of transportation. The old understanding of cars has become outdated. A car represents individuals' lifestyles, and it became an integral part of their lives. At the same time, the automobile industry has experienced seismic change. Hyundai Motor Company has grown rapidly to become one of the largest automakers, backed by world class production capability and superior quality. We have now reached a point where we need a qualitative approach to bring bigger ideas and relevant solutions to our customers. This is an opportunity to move forward and we have developed a new brand slogan that encapsulates our willingness to take a big leap. Led by our new slogan and the new thinking underlying it, we will become a company that keeps challenging itself to unlock new possibilities for people and the planet.

Hyundai Motor Company
<http://worldwide.hyundai.com>
GEN. RHD 1509 ENG. KM-KM

Copyright © 2016 Hyundai Motor Company. All Rights Reserved.

